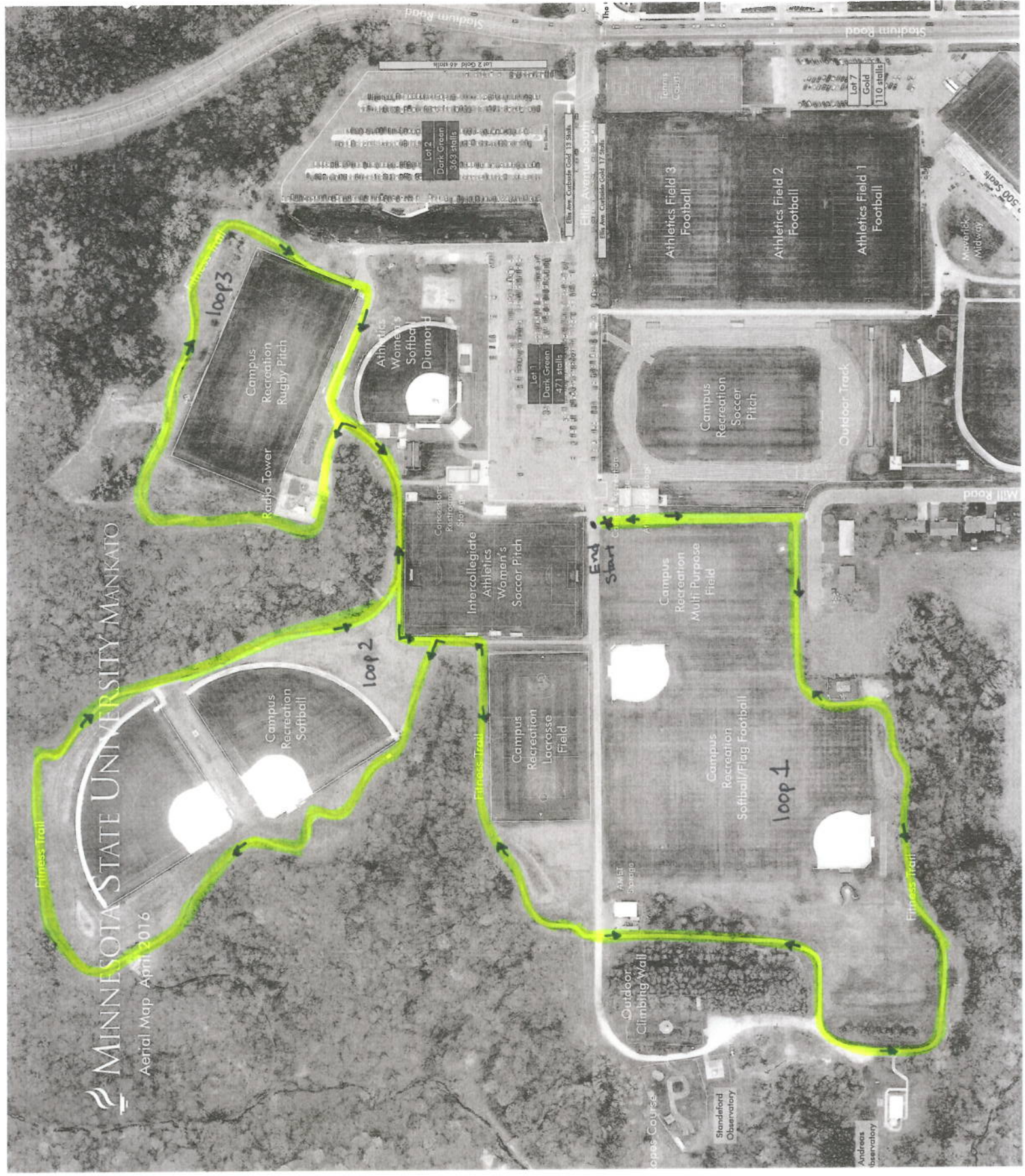


MSU  
Fitness  
Trail

\* Start and End at Same place  
Follow trail, turn left into loops, after loop 3 back track to loop 1 and end at the start  
2.50 miles



MINNESOTA STATE UNIVERSITY MANKATO

Aerial Map - April 2016

Labels on map include:  
 - Campus Recreation Softball  
 - Campus Recreation Rugby Pitch  
 - Athletics Women's Softball Diamond  
 - Intercollegiate Athletics Women's Soccer Pitch  
 - Campus Recreation Lacrosse Field  
 - Campus Recreation Multi Purpose Field  
 - Campus Recreation Soccer Pitch  
 - Athletics Field 1, 2, 3 Football  
 - Outdoor Track  
 - Outdoor Climbing Wall  
 - Fitness Trail  
 - Loop 1, Loop 2, Loop 3  
 - Start, End  
 - Stadium Road, Mill Road, 500 South  
 - Lot 1, Lot 2, Lot 7, Lot 110  
 - Dark Green 263 stalls, 471 stalls, 110 stalls  
 - Tennis Court  
 - Standford Observatory  
 - Andreas Observatory  
 - Open Course