

## MINNESOTA STATE UNIVERSITY, MANKATO COVID-19 MAVERICK RETURN TO LEARN PLAN

Mavericks push boundaries to lead change. As we begin our return to campus we ask, “What does a comprehensive state university look like in a post-pandemic world?” While there are many unknowns as we plan for the fall and beyond, the Maverick Return to Learn Planning effort identifies return to learning values, phases for preparation, planning scenarios, strategic areas of focus, and a planning structure to lead our return.

As we approach this planning process, our **Return to Learn Values** will provide focus and direction. These are:

- Keep our students, faculty, and staff healthy and safe
- Assure that students can maintain progress toward their educational goals
- Maintain the financial sustainability of the university
- Pursue the strategic directions and priorities of the university
- Advance toward achieving Equity 2030 goals

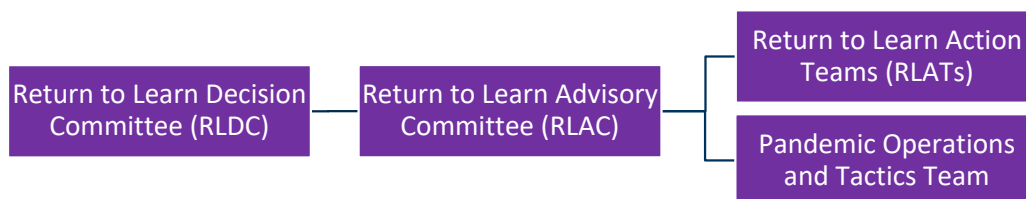
Our planning will support a **Multi-Phase Planning timeline** to address immediate and long-range needs:

- Phase 1 Short-term (May-August 2020)
- Phase 2 Mid-term (August-December 2020)
- Phase 3 Long-term (January 2021- )

Our planning will occur within a **Scenario Framework** as directed by the Minnesota State system to enable agile shifts as conditions change.

- Scenario A No restrictions on movement or size of gatherings
- Scenario B Restrictions on movement and size of gatherings, but no stay at home order in place
- Scenario C Significant restrictions on movement and gatherings, with stay at home order in place for part or all of the semester

Our **Planning Structure** will assure a timely and transparent planning process. We will have two leadership teams. The first is the Return to Learn Decision Committee (RLDC), which will serve as the senior decision-making body. The second leadership team is the Return to Learn Advisory Committee (RLAC), which will recommend solutions and report to the RLDC. The RLAC will be supported by Return to Learn Action Teams (RLATs) and a Pandemic Operations and Tactics Team. The RLAC will create additional Return to Learn Action Teams (RLATs) as needed.



The complexity of this effort requires a **multifaceted planning approach**. Our planning effort incorporates three core areas of work:

- Return to Learn COVID-19 Preparedness Plan
- Department/Work Unit Continuity Plans
- Return to Learn Strategic Plans: Student learning; student life; employee return to workplace; financial; communications, marketing, enrollment, and advancement; and partnerships, continuing education and customized training, and comprehensive workforce solutions.

The foundational area of work is the University's Return to Learn COVID-19 Preparedness Plan. The preparedness plan outlines the core COVID-19 health and safety measures established to safeguard the wellbeing of the campus community.